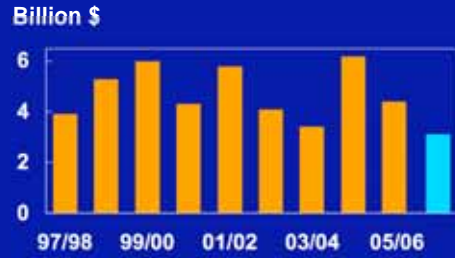


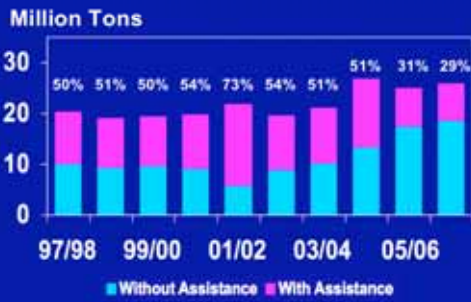


International Cotton  
Advisory Committee

### DIRECT ASSISTANCE TO PRODUCTION: WORLD



### WORLD PRODUCTION UNDER DIRECT ASSISTANCE



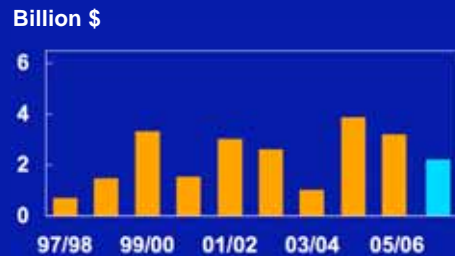
### ASSISTANCE TO EXPORTS: WORLD



### DIRECT ASSISTANCE TO PRODUCTION: USA

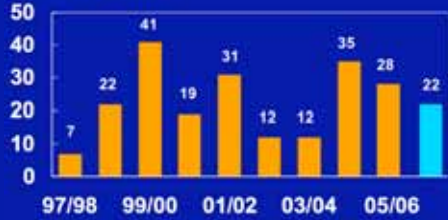


### DIRECT ASSISTANCE TO PRODUCTION: USA



### DIRECT ASSISTANCE TO PRODUCTION: USA

Cents per Pound



### Adjusted World Price

Cents Per Pound



### U.S Price Mechanism

Cents Per Pound



### DIRECT ASSISTANCE TO PRODUCTION: EU

Million \$



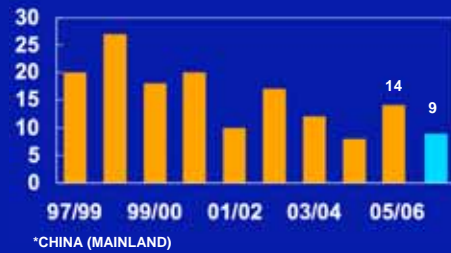
### DIRECT ASSISTANCE TO PRODUCTION: EU

Cents Per Pound



### BORDER PROTECTION ASSISTANCE TO COTTON\*

Cents Per Pound



### BORDER PROTECTION ASSISTANCE TO COTTON\*

Billion \$



\*CHINA (MAINLAND)

### COTTON SUPPORT TO PRODUCTION

Billion \$

